

# Anatomía de la Lengua

**JUAN D. SIGÜENZA R.  
TATIANA SIGÜENZA P**

**AZOGUES  
2009**



**Municipio de Azogues 1920**

# LENGUA

## Partes



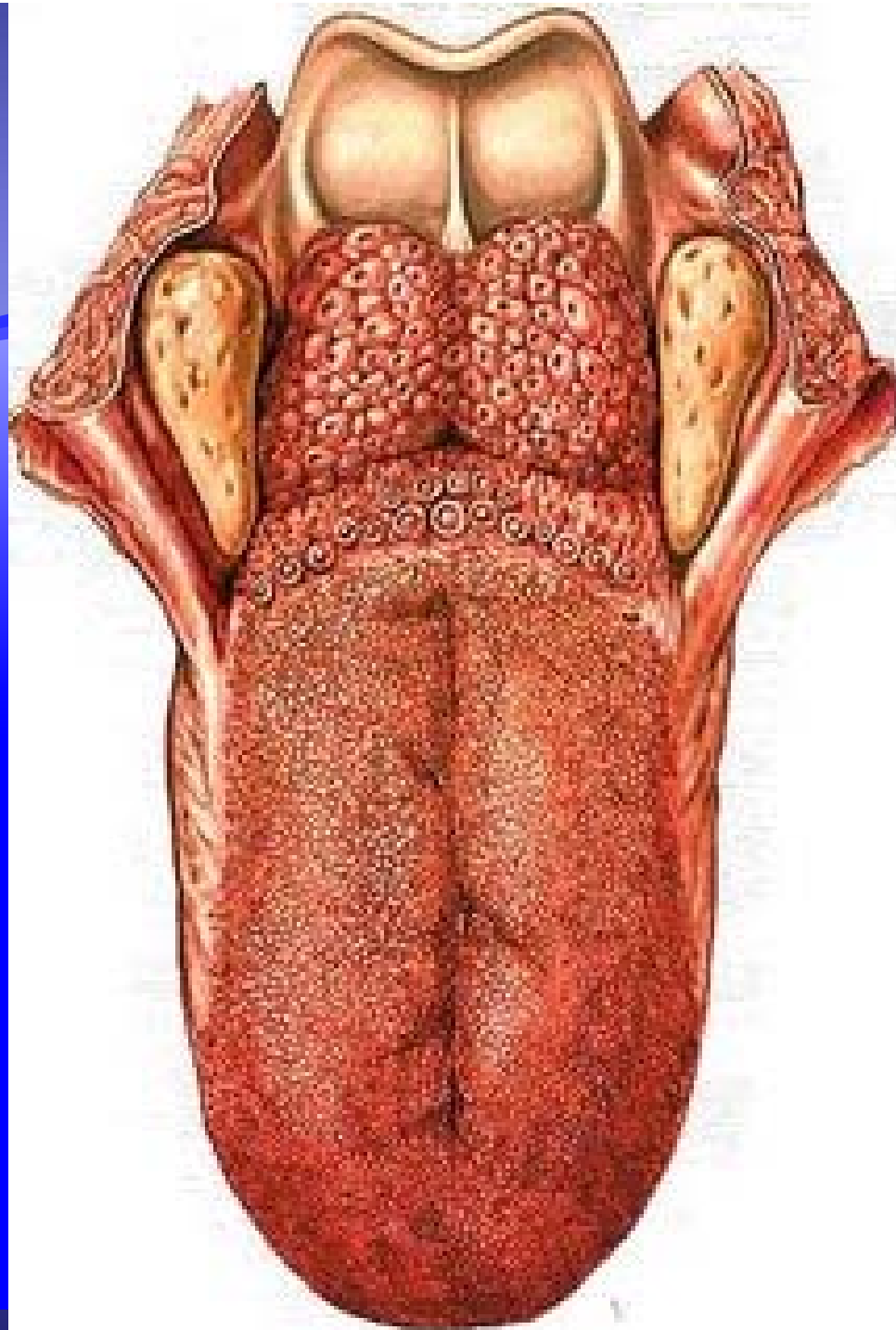
Raíz

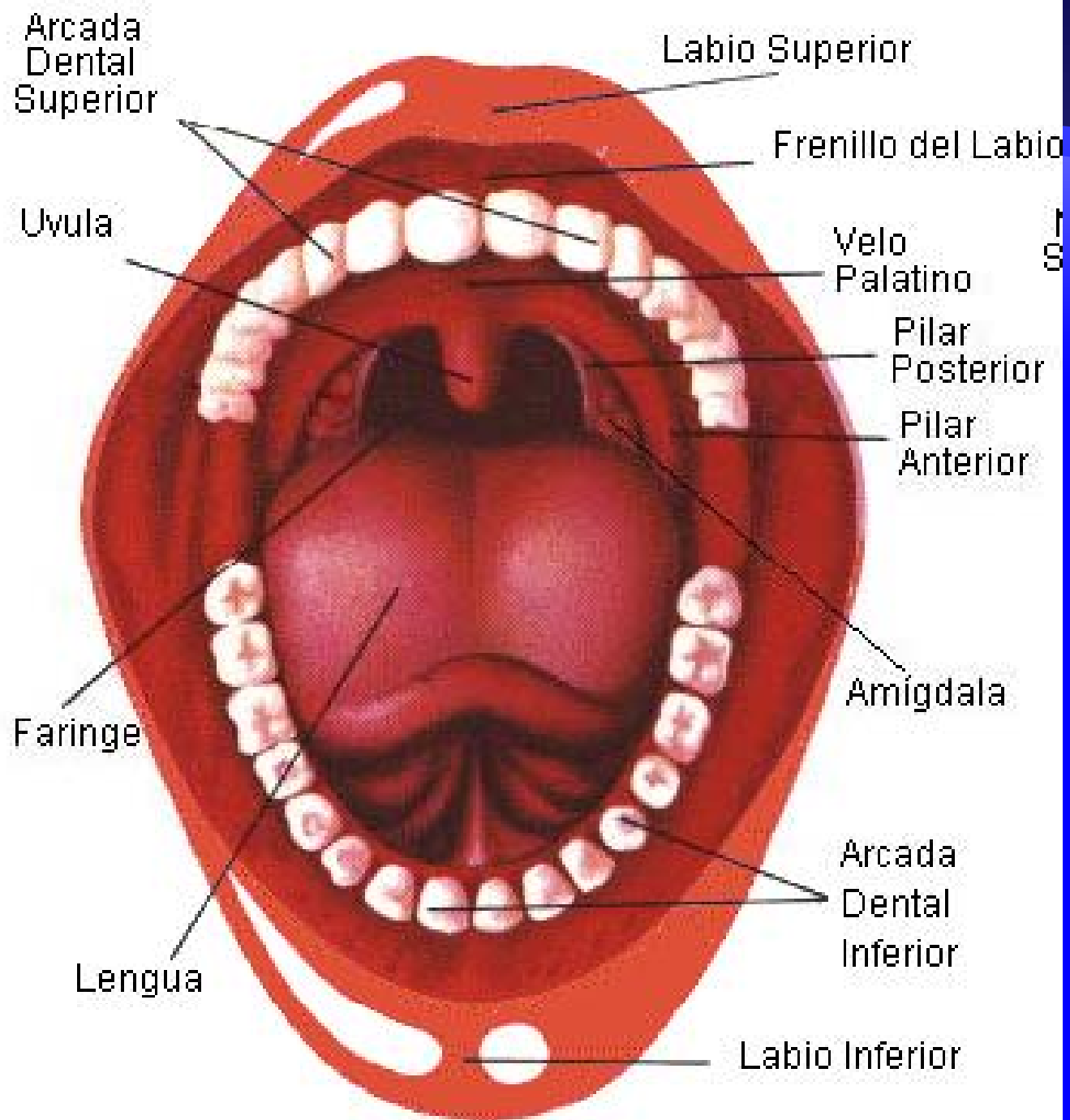
Cuerpo

Vértice

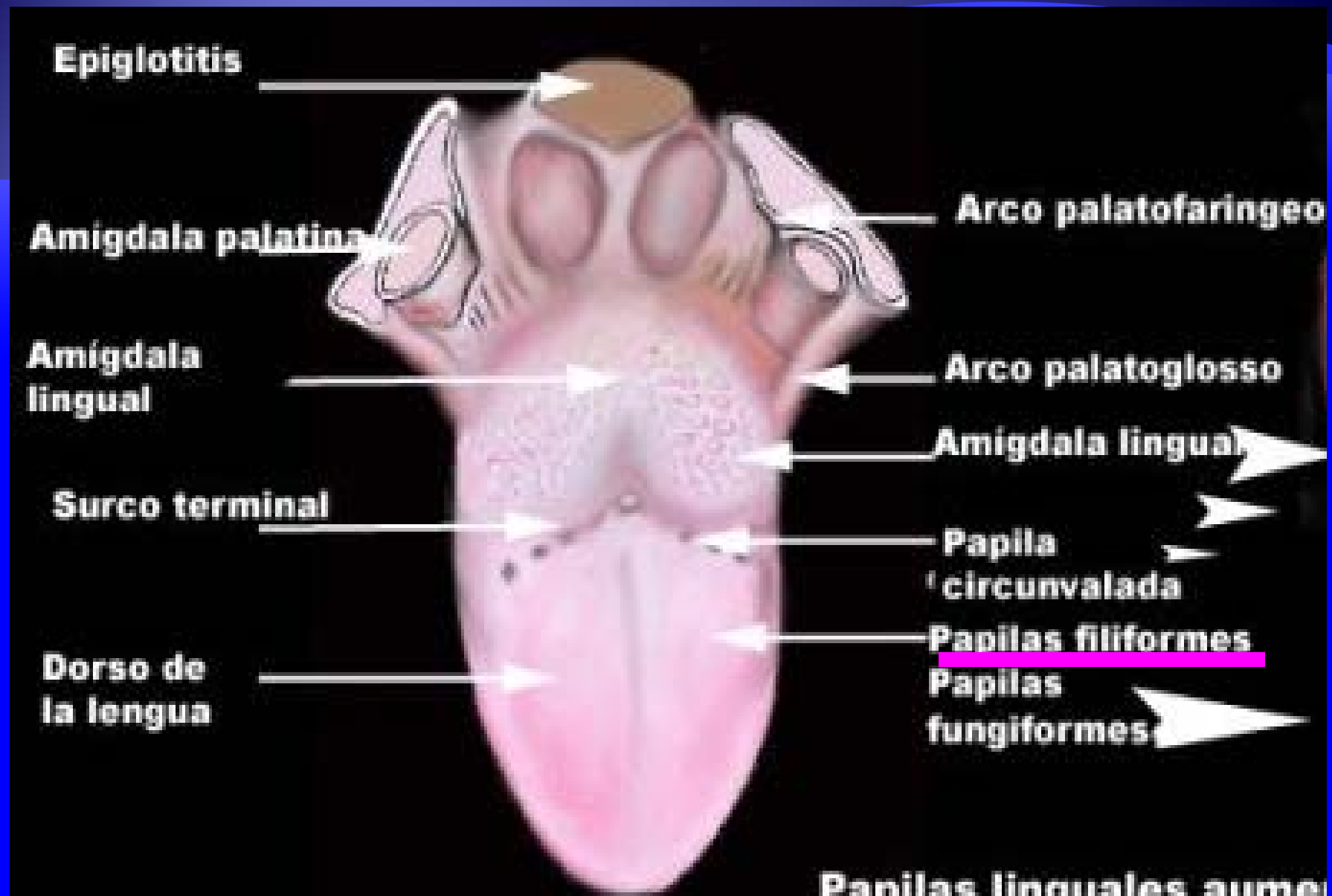
Dorso

Cara Inferior





# PAPILAS LINGUALES





AMARGO



ÁCIDO

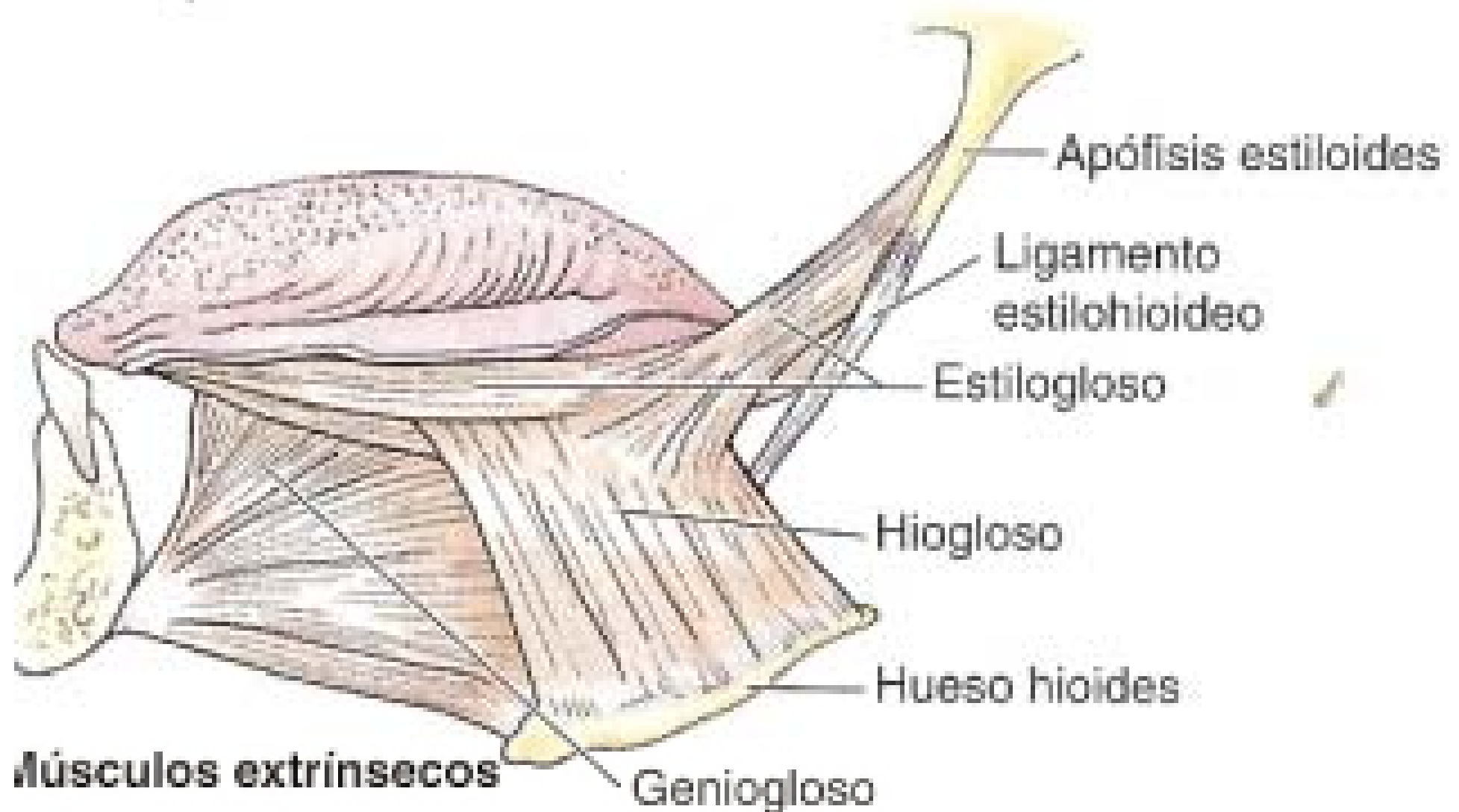


SALADO

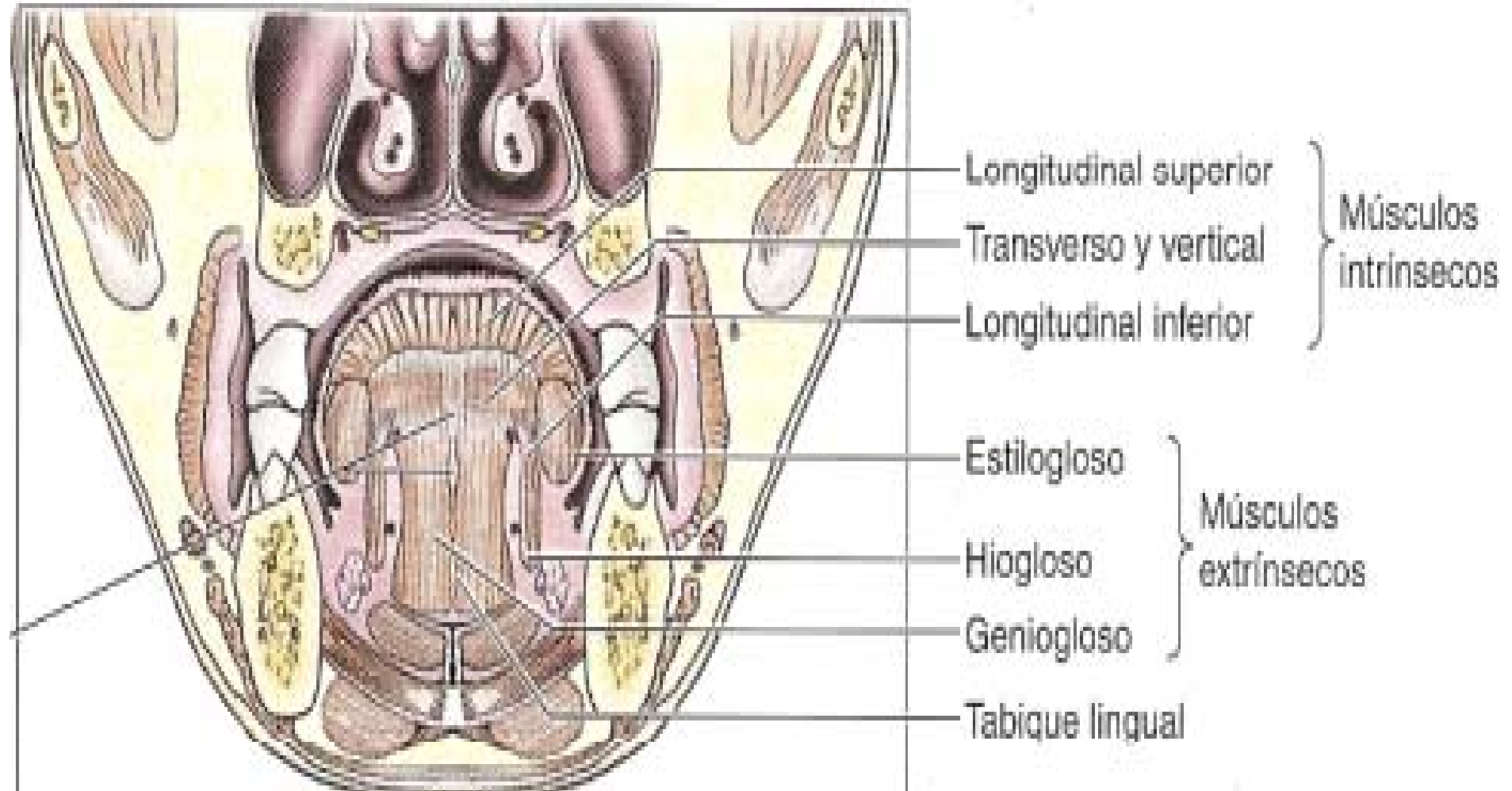


DULCE

## Extrínsecos:

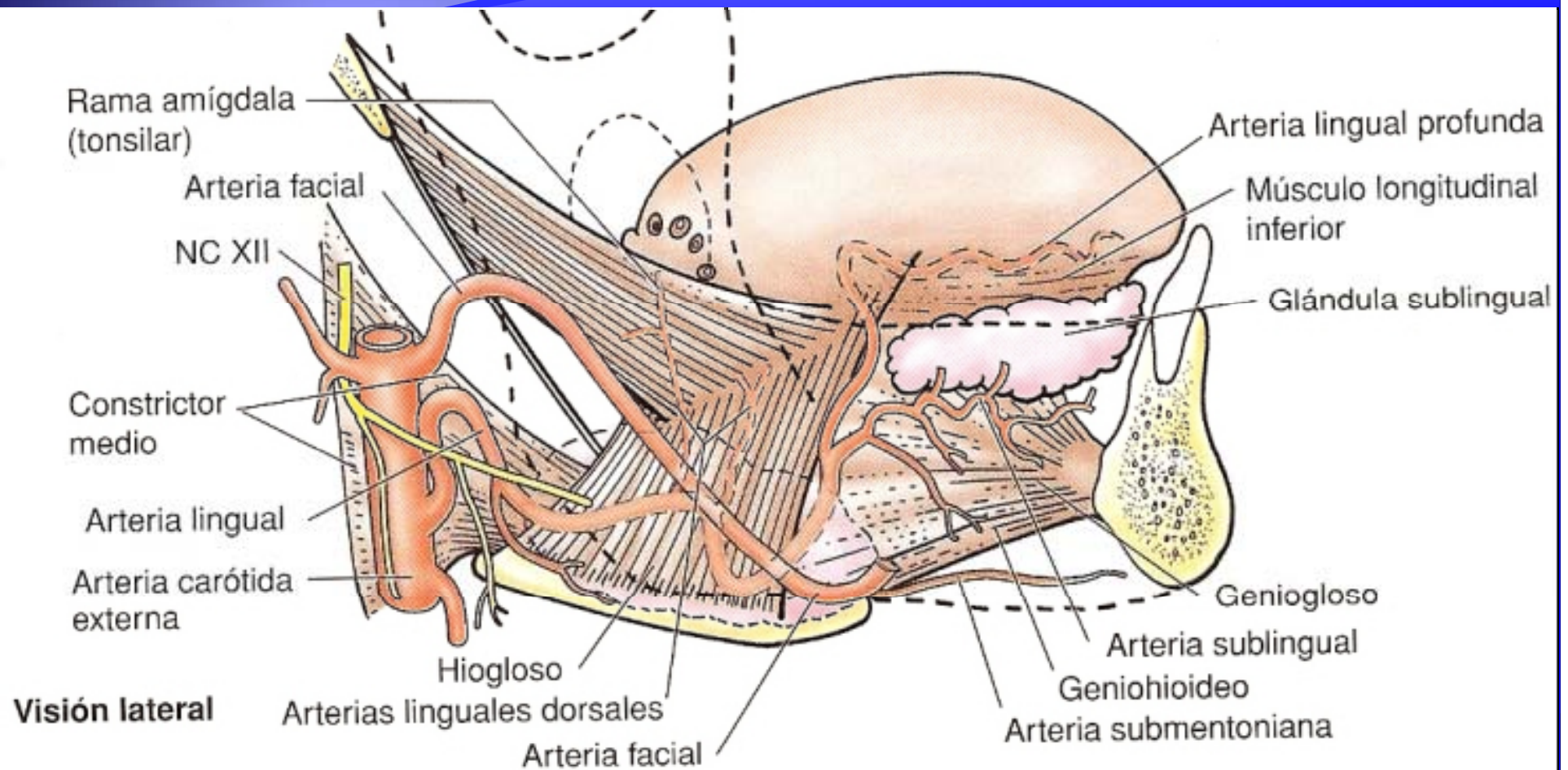


# INTRINSECOS

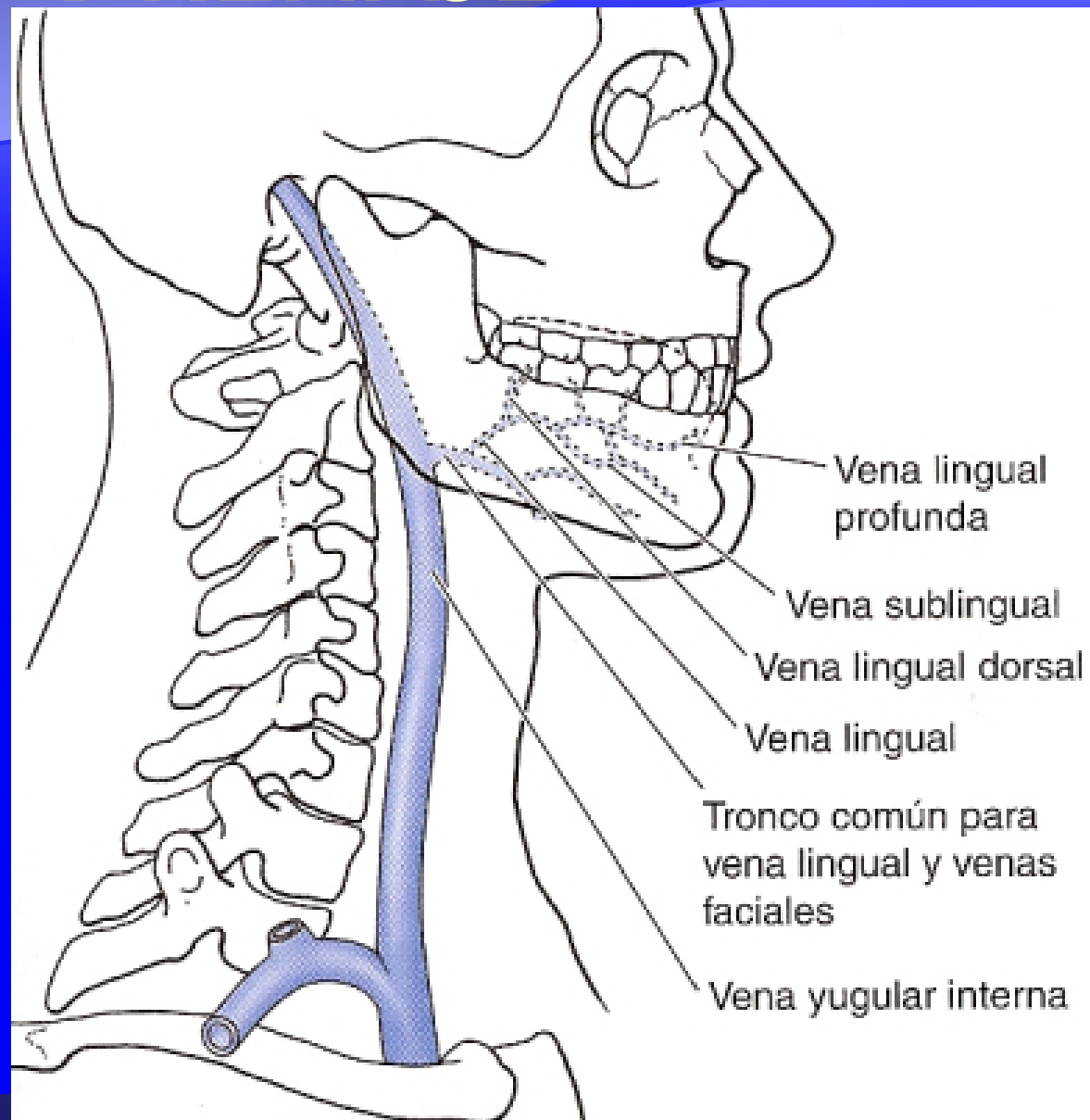




# IRRIGACIÓN

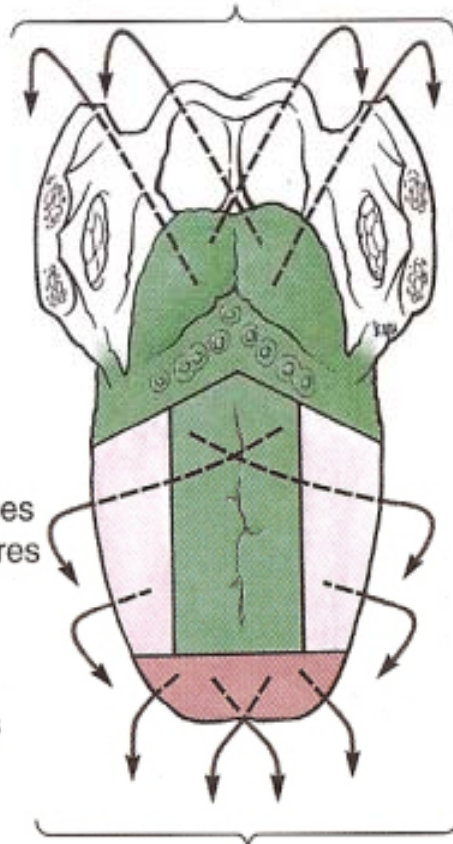


# DRENAJE



# DRENAJE LINFÁTICO

A los ganglios linfáticos cervicales profundos superiores



A los ganglios linfáticos cervicales profundos inferiores

A los ganglios linfáticos submandibulares

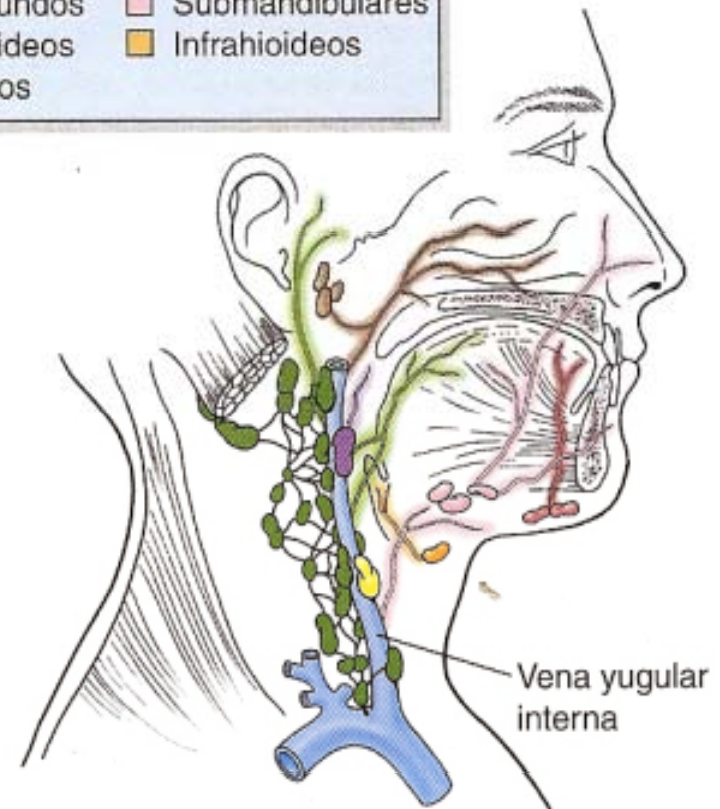
A los ganglios linfáticos submentonianos

## Clave

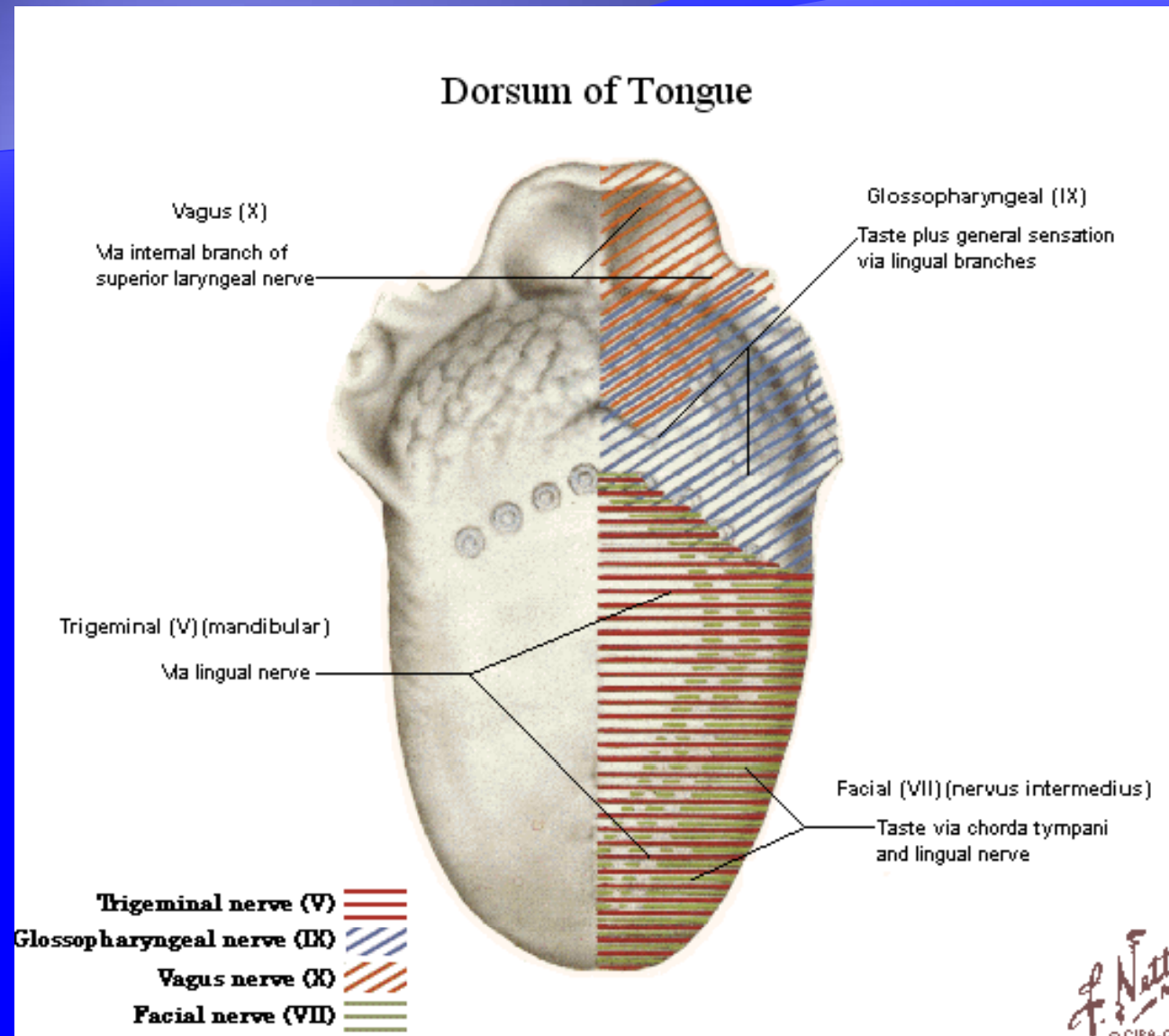
Retrofaríngeos	Submentonianos
Cervicales profundos	Submandibulares
Yúgulo-omohioideos	Infrahioideos
Yugulodigástricos	

A los ganglios linfáticos cervicales profundos inferiores

A los ganglios linfáticos submandibulares

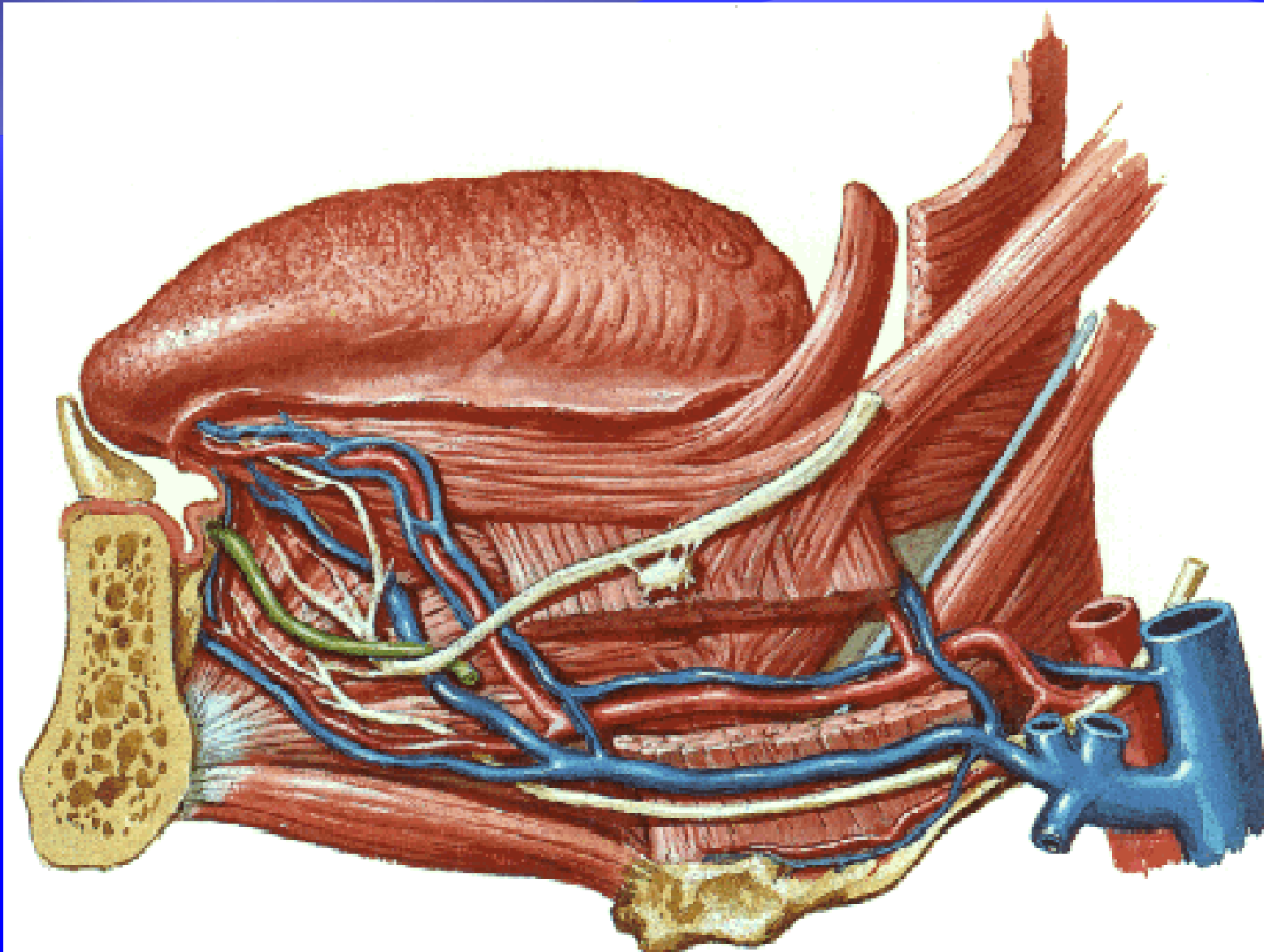


# INERVACION





# IRRIGACION DRENAJE





The background is a solid blue gradient. A wavy line, resembling a horizon or a stylized wave, separates a darker blue upper section from a lighter blue lower section. The word "Gracias" is centered in the lighter blue area.

Gracias