

LOS SENSORES REMOTOS Y SU APLICACIÓN AL ESTUDIO DE LOS DESLIZAMIENTOS Y FLUJOS DE LODOS EN NICARAGUA

Tupak Obando

Ingeniero en Geología
Máster y Doctorado en
Geología y Gestión Ambiental
de Recursos Mineros en la
UNIA (Huelva, España)

2009



FORMOSAT-2

MONITORING OF LANDSLIDES IN NICARAGUA



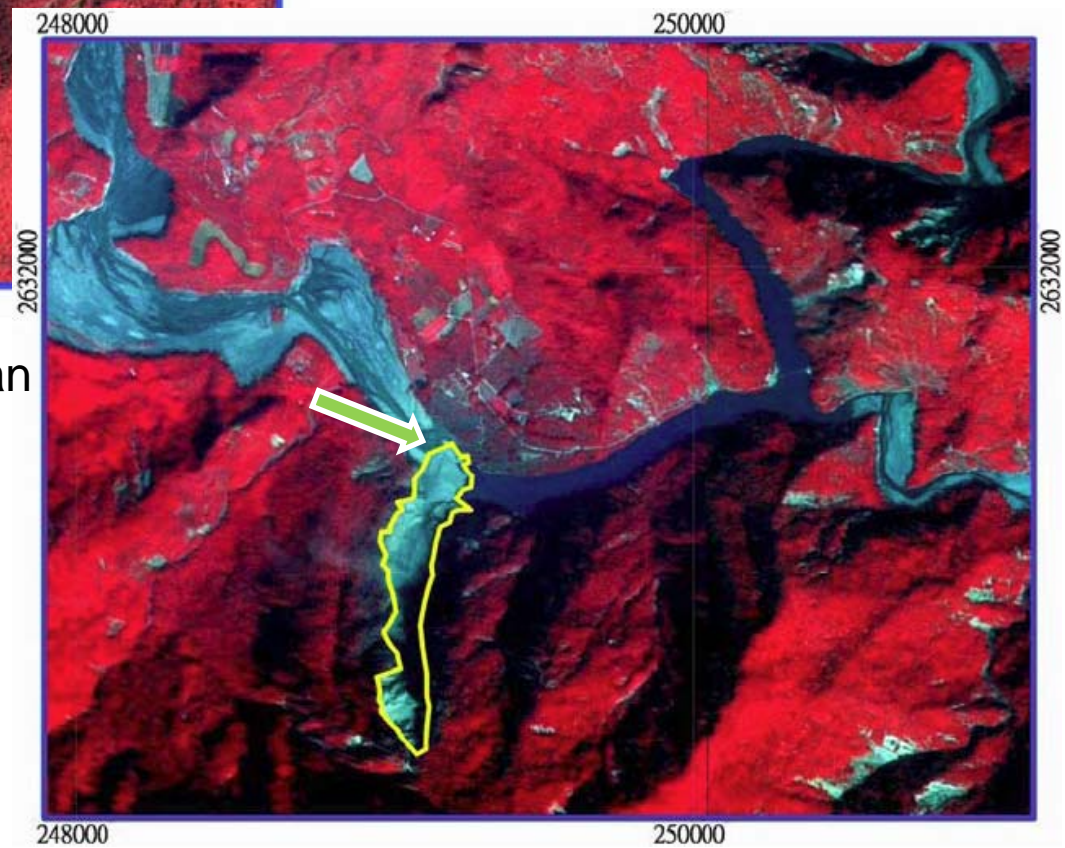
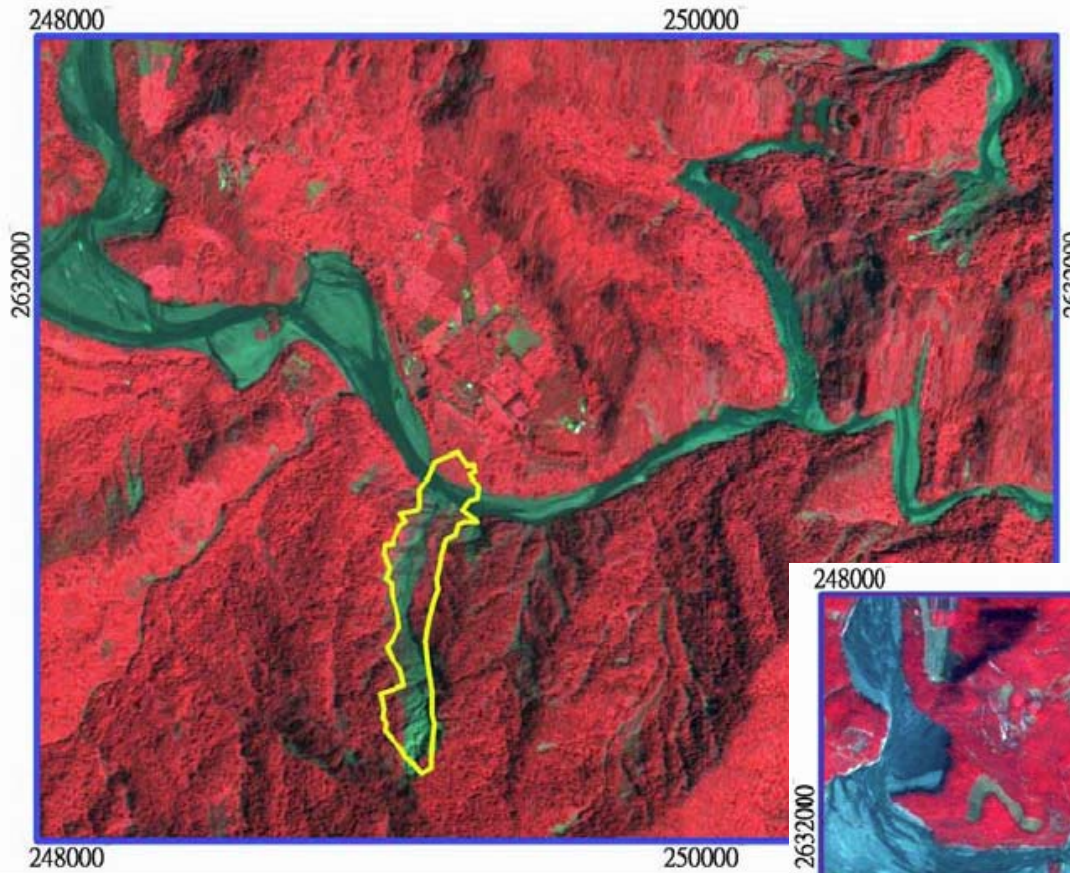
Cortesía de Ineter

EXPERIENCE IN THE UCNT

☐ LANDSLIDES

FORMOSAT-2

DATE: 07/01/2007



Cortesía de Investigadores de Taiwan

SPOT-5

DATE: 03/13/2008

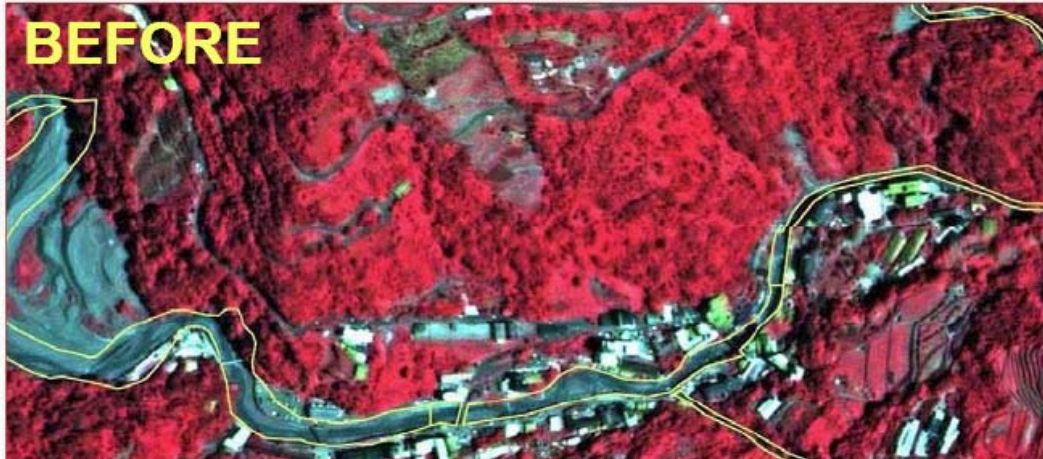


EXAMPLE
Tifón en Sinalaku

268000

BEFORE

2658000



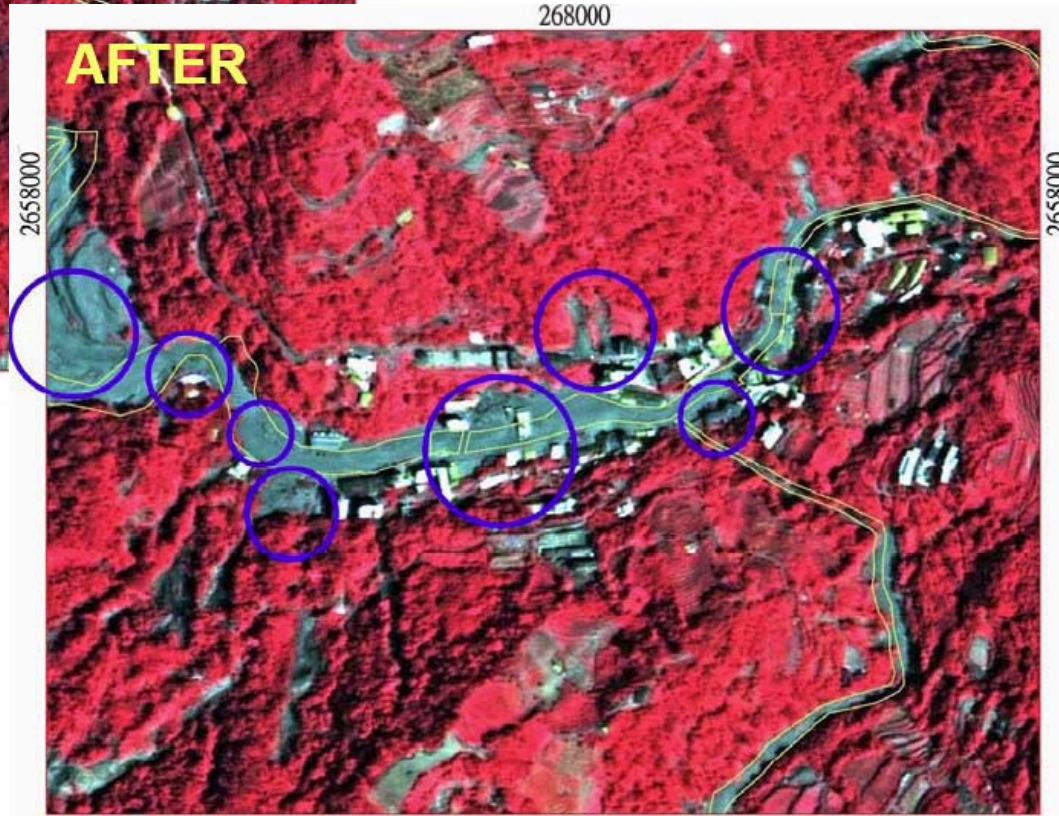
DETECTION MUDFLOW
AND LANDSLIDES

FORMOSAT-2

DATE: 08/24/2008

AFTER

2658000



FORMOSAT-2

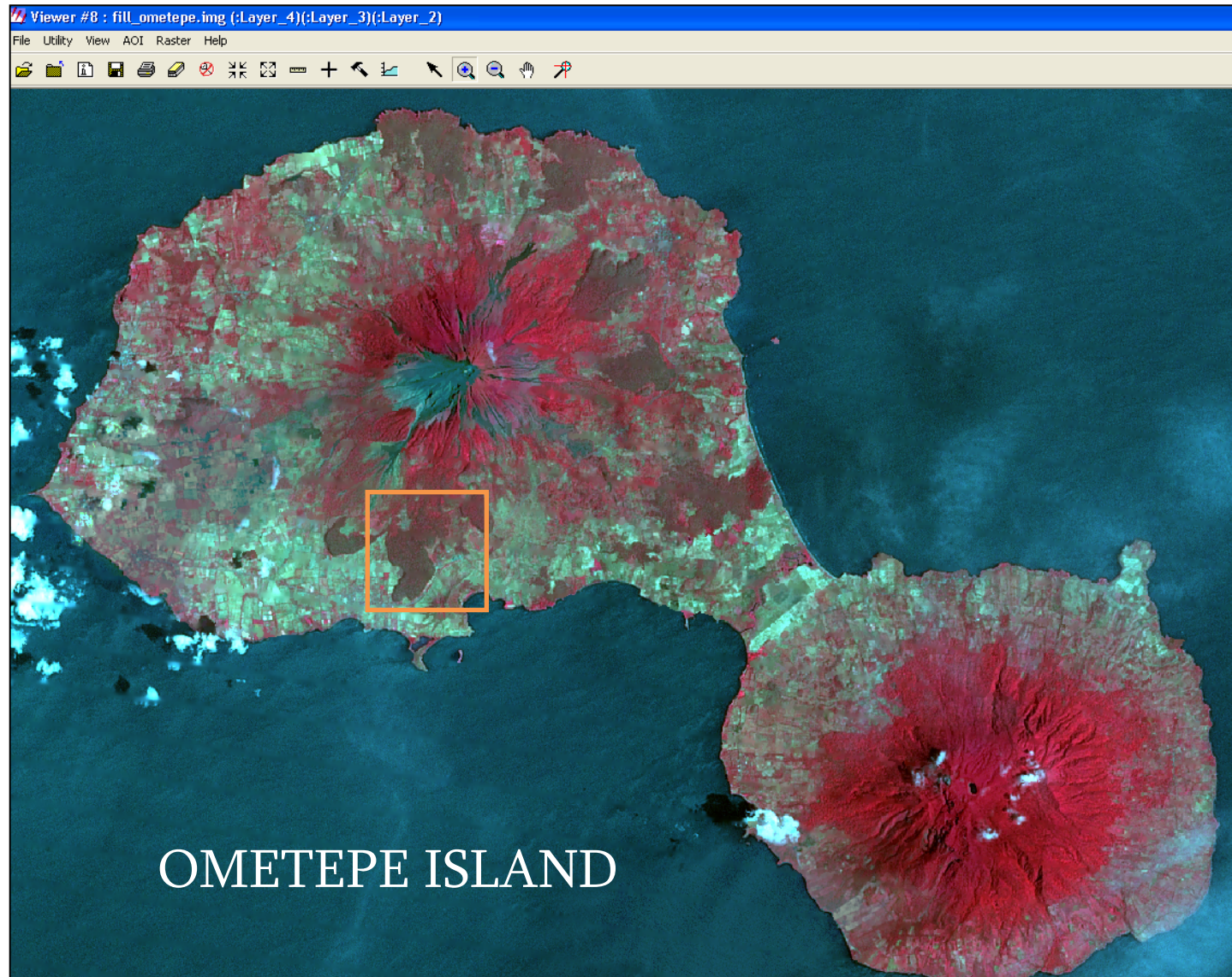
DATE: 09/17/2008

Cortesía de Investigadores de Taiwan

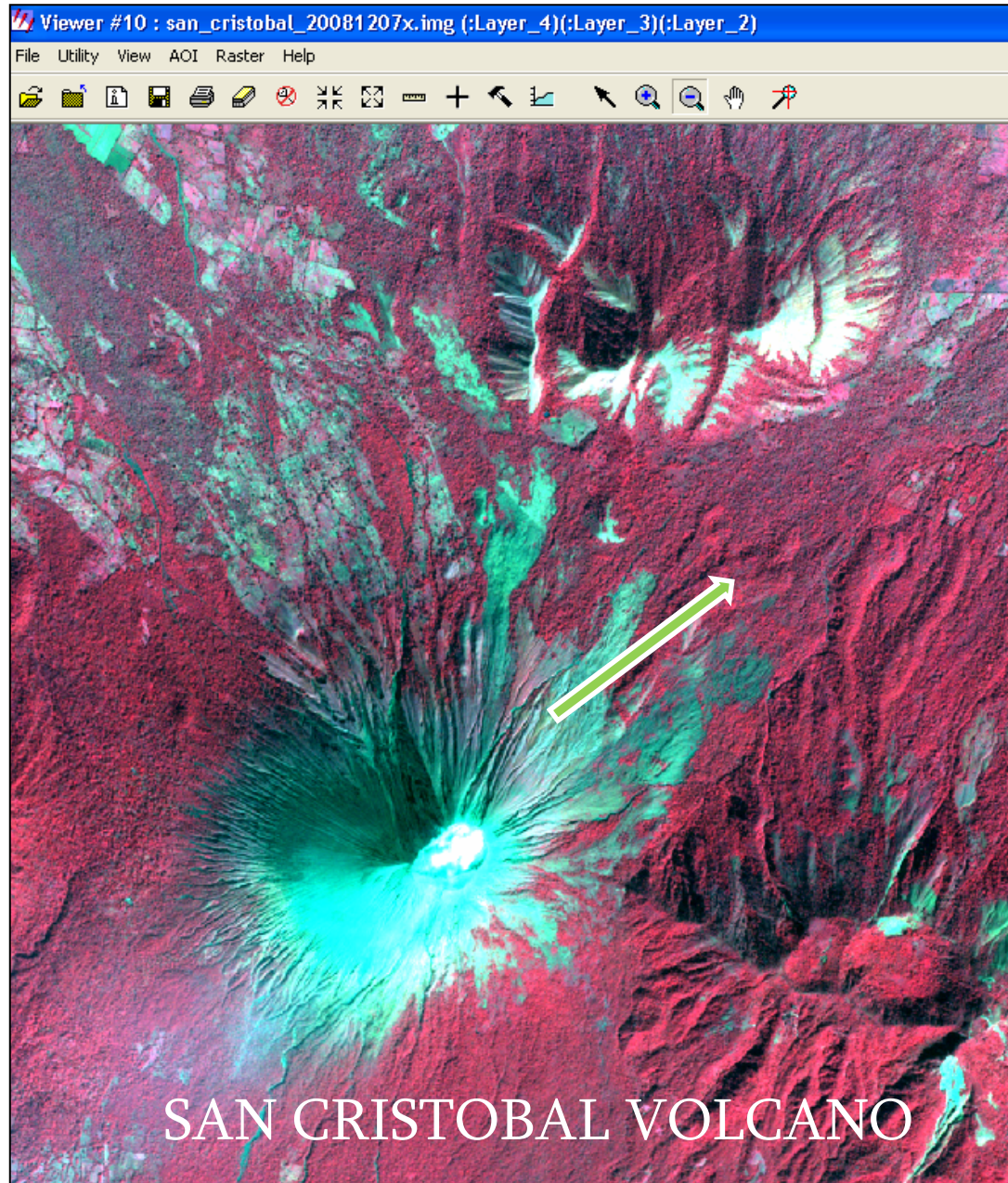


EXAMPLE
Tifón en Sinalaku

EXPERIENCE IN NICARAGUA



Cortesía de Ineter



Cortesía de Ineter

RESULTS

- Spatial position of phenomenon
- Dimension, extension and direction of mudflow and landslides
- Persons and towns in hazard
- Before and after perspective
- Data about magnitude and velocity of event
- Sequences in the time and space for monitoring of landslides

LINE FUTURE WORK

- ❑ Spatial Model for analysis of landslides in Urbaite
- ❑ Model for analysis of landslides and mudflows in Corosal Community
- ❑ Spatial Model for analysis of landslides in La Chirca Tows
- ❑ Model for analysis of landslides and mudflows in San Pedro Community /Union
- ❑ Model for analysis of lahaar in the Valle Morenos and La Suiza Community, San Cristobal Volcano